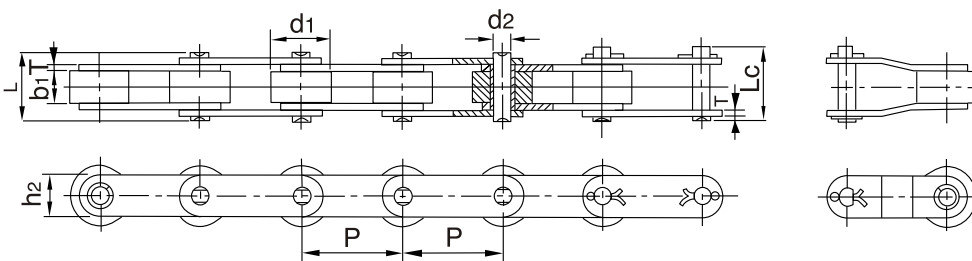
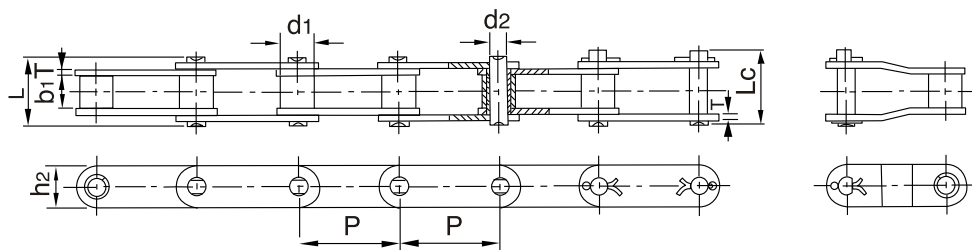
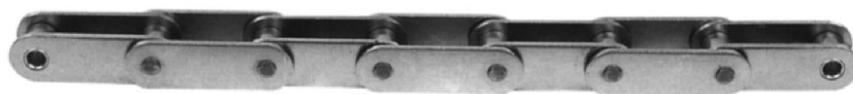


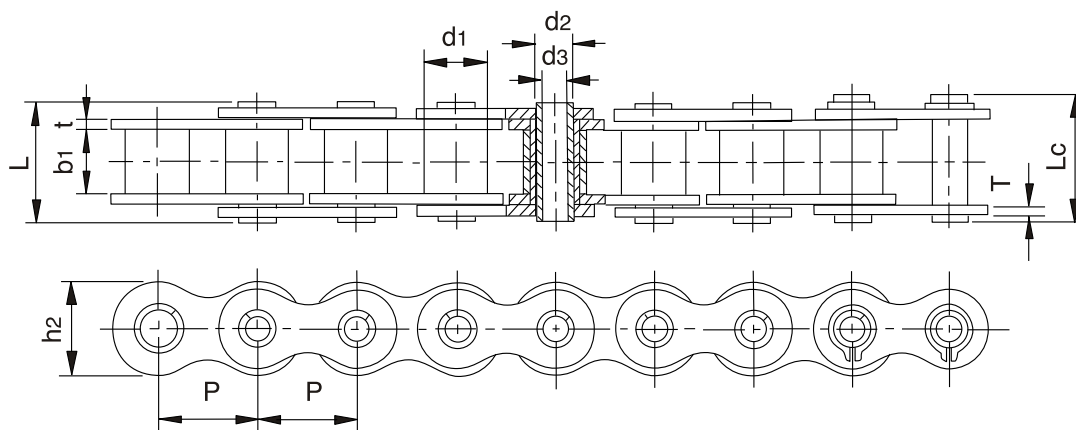
DIN/ISO	P mm.	d1 máx mm.	b1 mín mm.	d2 máx mm.	L máx mm.	Lc máx mm.	h2 máx mm.	t/T máx mm.	Q mín. kN	Q0 kN	q kg./m.
*25SS	6.350	3.30	3.18	2.31	7.9	8.4	6.00	0.8	2.5	2.8	0.15
*35SS	9.525	5.08	4.77	3.58	12.4	13.17	9.00	1.30	5.5	6.6	0.33
40SS	12.700	7.95	7.85	3.96	16.6	17.8	12.00	1.50	9.6	10.8	0.63
50SS	15.875	10.16	9.40	5.08	20.7	22.2	15.09	2.03	15.2	17.2	1.03
60SS	19.050	11.91	12.57	5.94	25.9	27.7	18.00	2.42	21.7	26.4	1.51
80SS	25.400	15.88	15.75	7.92	32.7	35.0	24.00	3.25	38.9	46.6	2.62
100SS	31.750	19.05	18.90	9.53	40.4	44.7	30.00	4.00	60.0	70.2	3.94
120SS	38.100	22.23	25.22	11.10	50.3	54.3	35.70	4.8	88.9	104.8	5.72
04BSS	6.000	4.00	2.80	1.85	6.80	7.8	5.00	0.60	2.0	2.4	0.11
05BSS	8.000	5.00	3.00	2.31	8.20	8.9	7.10	0.80	3.5	4.1	0.20
#06BSS	9.525	6.35	5.72	3.28	13.15	14.1	8.20	1.30	6.2	6.8	0.41
08BSS	12.700	8.51	7.75	4.45	16.7	18.2	11.80	1.60	12.0	14.3	0.70
10BSS	15.875	10.16	9.65	5.08	19.5	20.9	14.70	1.70	14.5	17.2	0.94
12BSS	19.050	12.07	11.68	5.72	22.5	24.2	16.00	1.85	18.5	20.9	1.16
16BSS	25.400	15.88	17.02	8.28	36.1	37.4	21.00	4.15/3.1	40.0	47.6	2.73
20BSS	31.750	19.05	19.56	10.19	41.3	45.0	26.40	4.5/3.5	59.0	69.6	3.73
24BSS	38.100	25.40	25.40	14.63	53.4	57.8	33.20	6.0/4.8	112.0	126.6	7.20



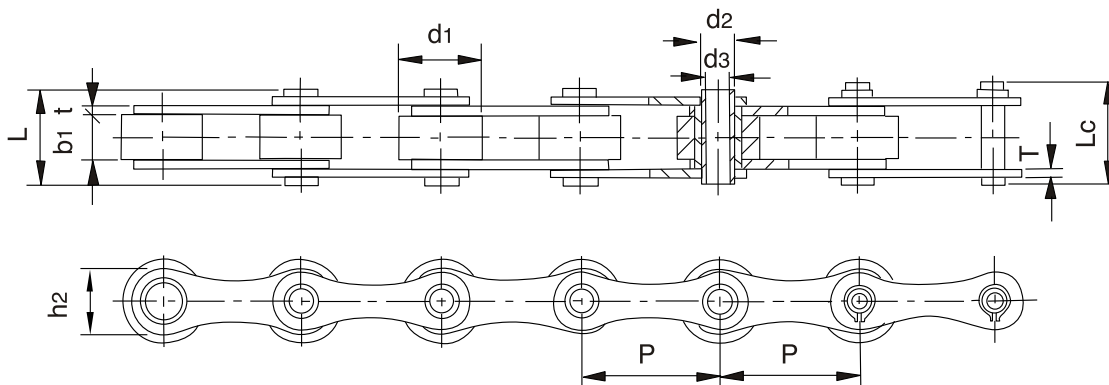
DIN/ISO	P mm.	d1 máx mm.	b1 min mm.	d2 máx mm.	L máx mm.	Lc máx mm.	h2 máx mm.	T máx mm.	Q min. kN	Q0 kN	q kg./m.
C2040SS C2042SS	25.40	7.95 15.88	7.85	3.96	16.6	17.8	12.0	1.50	9.6	11.0	0.51 0.85
C2040HSS	25.40	7.95	7.85	3.96	18.8	19.9	12.0	2.03	9.6	11.0	0.66
C208BSS C208BLSS	25.40	8.51 15.88	7.75	4.45	16.7	18.2	11.8	1.60	12.0	13.8	0.56 0.90
C2050SS C2052SS	31.75	10.16 19.05	9.40	5.08	20.7	22.2	15.0	2.03	15.2	17.5	0.79 1.29
C2060SS C2062SS	38.10	11.91 22.23	12.57	5.94	25.9	27.7	18.0	2.42	21.7	24.9	1.13 1.63
C2060HSS C2062HSS	38.10	11.91 22.23	12.57	5.94	29.2	31.6	18.0	3.25	21.7	24.9	1.46 2.10
C2080SS C2082SS	50.80	15.88 28.58	15.75	7.92	32.7	36.5	24.0	3.25	38.9	44.7	2.11 3.16
C2080HSS C2082HSS	50.80	15.88 28.58	15.75	7.92	36.2	39.4	24.0	4.00	38.9	44.7	2.57 3.63
C2100SS C2102SS	63.50	19.05 39.67	18.90	9.53	40.4	44.7	30.0	4.00	60.0	69.0	3.05 4.89
C2100HSS C2102HSS	63.50	19.05 39.67	18.90	9.53	43.6	46.9	30.0	4.80	60.0	69.0	3.61 5.45



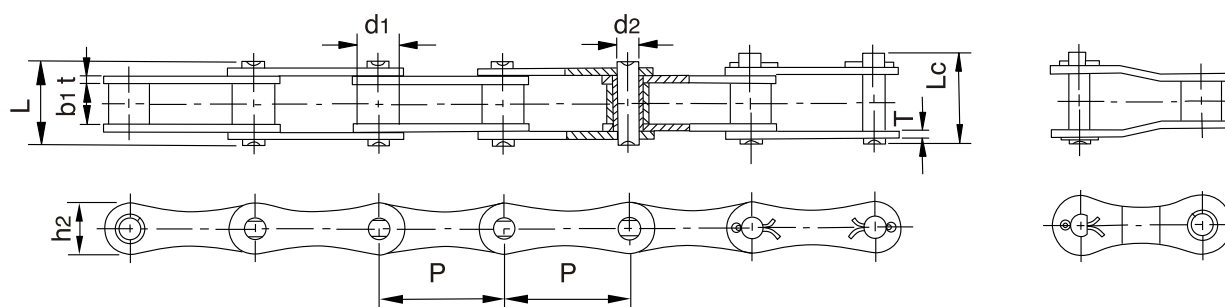
**Tipo A**



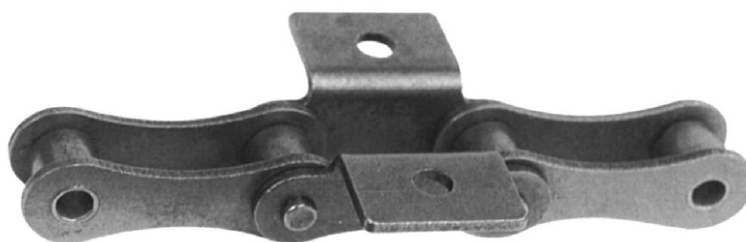
**Tipo B**



DIN/ISO	P mm.	d1 máx mm.	b1 mín mm.	d2 máx mm.	d3 mín mm.	L máx mm.	Lc máx mm.	h2 máx mm.	t/T máx mm.	Q min kN	Q <sub>0</sub> kN	q kg/m	
08BHPFSS	12.700	8.51	7.75	6.55	4.50	16.4	17.6	11.80	1.6/1.3	7.8	8.5	0.57	A
40HPSS	12.700	7.95	7.85	5.63	4.00	16.5	17.6	12.00	1.50	7.7	8.5	0.55	A
50HPSS	15.875	10.16	9.40	7.03	5.13	20.7	21.9	15.09	2.03	14.0	15.4	0.92	A
60HPSS	19.050	11.91	12.70	8.31	6.00	25.8	26.8	18.00	2.42	16.8	18.5	1.31	A
*12BHPSS	19.050	12.07	11.68	6.50	4.00	21.6	22.8	15.90	1.85	16.5	18.2	1.10	A
80HPSS	25.400	15.88	15.75	11.40	8.05	32.5	33.8	24.00	3.25	35.0	38.7	2.29	A
C2040HPSS	25.400	7.95	7.85	5.63	4.00	16.5	17.6	12.00	1.50	7.7	8.6	0.47	B
C2050HPSS	31.750	10.16	9.40	7.22	5.12	20.5	21.8	15.00	2.03	14.3	15.7	0.77	B
C2060HPSS	38.100	11.91	12.70	8.31	6.00	25.8	26.8	17.00	2.42	16.8	18.6	1.03	B
C2080HPSS	50.800	15.88	15.75	11.40	8.05	32.5	33.8	24.00	3.25	35.0	38.0	1.83	B
*HB50.8SS	50.800	30.00	10.50	11.40	8.20	27.4	28.6	26.00	3.10	35.0	38.5	2.60	



DIN/ISO	ANSI	P mm.	d1 máx mm.	b1 mín mm.	d2 máx mm.	L máx mm.	Lc mm.	h2 máx mm.	t/T máx mm.	Q mín. kN	Qo kN	q kg./m.
208A	2040	25.40	7.95	7.85	3.96	16.6	17.8	12.0	1.50	14.1	16.7	0.42
208B		25.40	8.51	7.75	4.45	16.7	18.2	11.8	1.60	18.0	19.4	0.45
210A	2050	31.75	10.16	9.40	5.08	20.7	22.2	15.0	2.03	22.2	28.1	0.73
210B		31.75	10.16	9.65	5.08	19.5	20.9	14.7	1.70	22.4	27.5	0.65
212A	2060	38.10	11.91	12.57	5.94	25.9	27.7	18.0	2.42	31.8	36.8	1.02
212B		38.10	12.07	11.68	5.72	22.5	25.2	16.0	1.85	29.0	32.2	0.76
216A	2080	50.80	15.88	15.75	7.92	32.7	36.5	24.0	3.25	56.7	65.7	1.70
216AH		50.80	15.88	15.75	7.92	36.2	39.4	24.0	4.00	56.7	70.0	2.17
216B		50.80	15.88	17.02	8.28	36.1	39.1	21.0	4.15/3.1	60.0	72.8	1.75
220A	2100	63.50	19.05	18.90	9.53	40.4	44.7	30.0	4.00	88.5	102.6	2.55
220B		63.50	19.05	19.56	10.19	41.3	45.0	26.4	4.5/3.5	95.0	106.7	2.62
224A	2120	76.20	22.23	25.22	11.10	50.3	54.3	35.7	4.80	127.0	147.3	4.06
224B		76.20	25.40	25.40	14.63	53.4	57.8	33.2	6.0/4.8	160.0	178.0	4.70
228B		88.90	27.94	30.99	15.90	65.1	69.5	36.7	7.5/6.0	200.0	222.0	6.23
232B		101.60	29.21	30.99	17.81	66.0	71.0	42.0	7.0/6.0	250.0	277.5	6.72

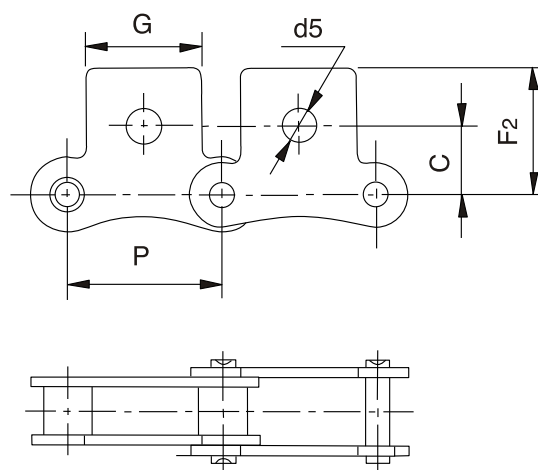
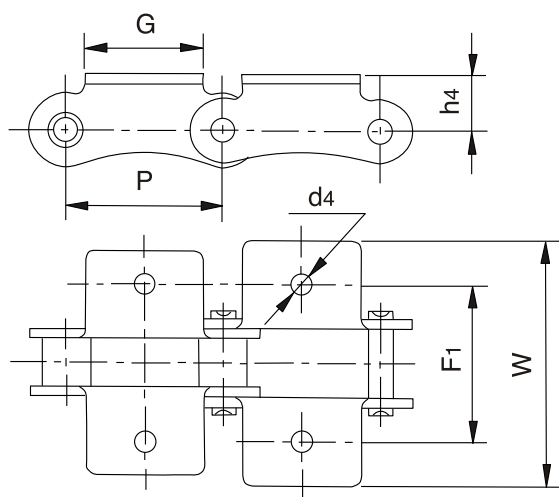


A-1

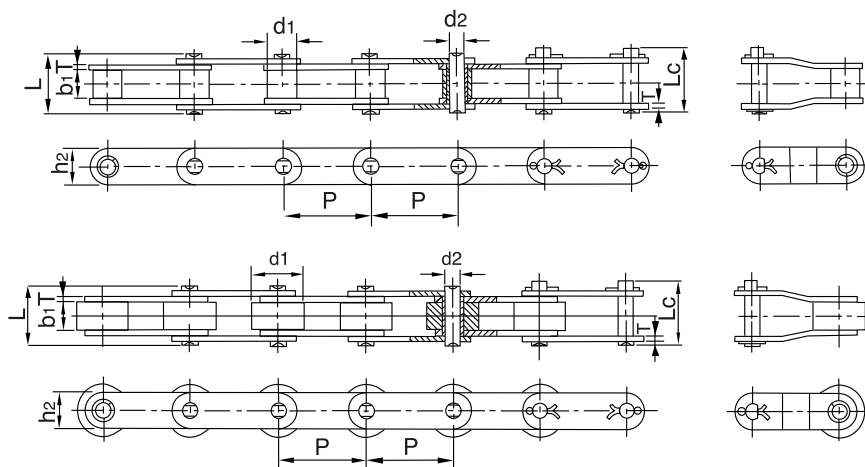
SA-1

K-1

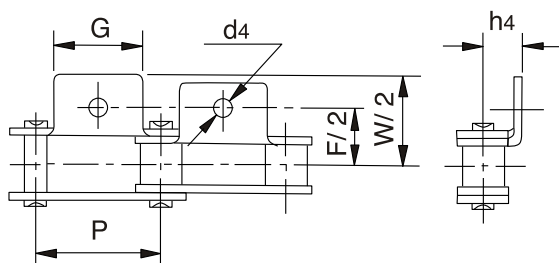
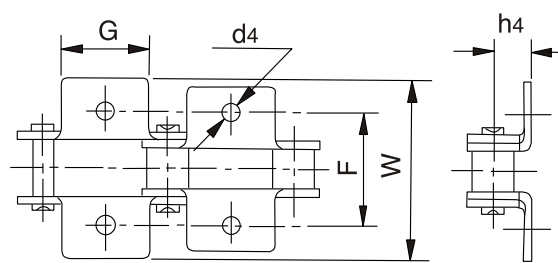
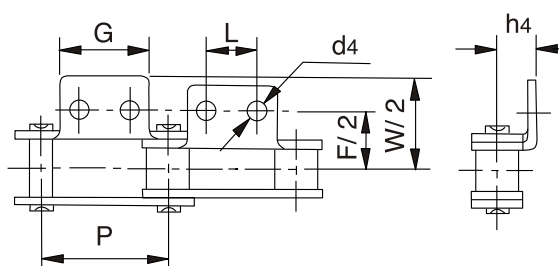
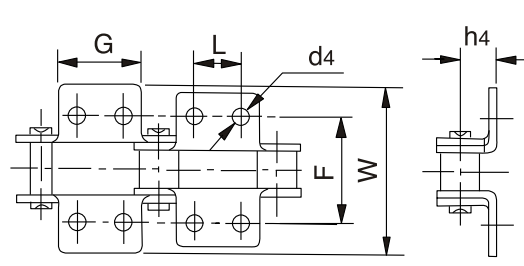
SK-1



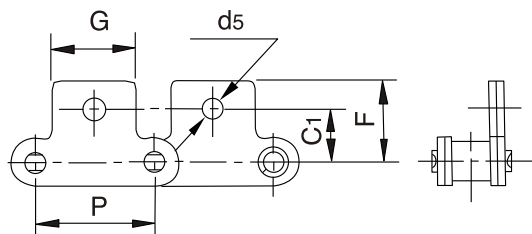
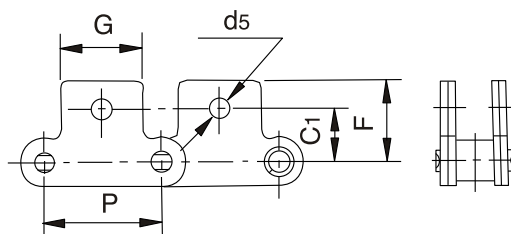
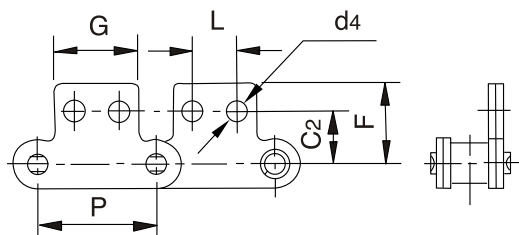
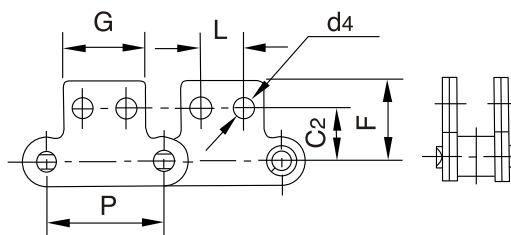
DIN/ISO	ANSI	P mm.	G mm.	F <sub>1</sub> mm.	W mm.	h <sub>4</sub> mm.	d <sub>4</sub> mm.	C mm.	F <sub>2</sub> mm.	d <sub>5</sub> mm.
208A	2040	25.40	19.1	25.4	39.6	9.1	3.4	11.1	20.5	5.5
210A	2050	31.75	23.8	31.8	49.0	11.1	5.5	14.3	25.0	6.6
212A	2060	38.10	28.6	42.9	67.8	14.7	5.5	17.5	32.9	9.2
216A	2080	50.80	38.1	55.6	87.8	19.1	6.8	22.2	43.5	11.0
220A	2100	63.50	47.6	66.6	107.5	23.4	9.2	28.6	50.4	13.0
224A	2120	76.20	57.2	79.3	127.5	27.8	11.0	33.3	55.5	15.0



DIN/ISO	ANSI	P	d1 máx	b1 mín	d2 máx	L máx	Lc máx	h2 máx	T máx	Q mín.	Q0	q
		mm.	mm.	mm.	mm.	mm.	mm.	mm.	mm.	kN	kN	kg./m.
C208A C208AL	C2040 C2042	25.40	7.95 15.88	7.85	3.96	16.6	17.8	12.0	1.50	14.1	16.7	0.50 0.84
C208AH	C2040H	25.40	7.95	7.85	3.96	18.8	19.9	12.0	2.03	14.1	17.2	0.65
C208B C208BL		25.40	8.51 15.88	7.75	4.45	16.7	18.2	11.8	1.60	18.0	19.4	0.55 0.89
C210A C210AL	C2050 C2052	31.75	10.16 19.05	9.40	5.08	20.7	22.2	15.0	2.03	22.2	28.1	0.78 1.27
C212A C212AL	C2060 C2062	38.10	11.91 22.23	12.57	5.94	25.9	27.7	18.0	2.42	31.8	36.8	1.12 1.61
C212AH C212AHL	C2060H C2062H	38.10	11.91 22.23	12.57	5.94	29.2	31.6	18.0	3.25	31.8	41.6	1.44 2.07
C216A C216AL	C2080 C2082	50.80	15.88 28.58	15.75	7.92	32.7	36.5	24.0	3.25	56.7	65.7	2.08 3.12
C216AH C216AHL	C2080H C2082H	50.80	15.88 28.58	15.75	7.92	36.2	39.4	24.0	4.00	56.7	70.0	2.54 3.58
C220A C220AL	C2100 C2102	63.50	19.05 39.67	18.90	9.53	40.4	44.7	30.0	4.00	88.5	102.6	3.01 4.83
C220AH C220AHL	C2100H C2102H	63.50	19.05 39.67	18.90	9.53	43.6	46.9	30.0	4.80	88.5	112.4	3.56 5.38
C224A C224AL	C2120 C2122	76.20	22.23 44.45	25.22	11.10	50.3	54.3	35.7	4.80	127.0	147.3	4.66 7.66
C224AH C224AHL	C2120H C2122H	76.20	22.23 44.45	25.22	11.10	53.5	57.5	35.7	5.60	127.0	160.9	5.26 8.26
C232A C232AL	C2160 C2162	101.60	28.58 57.15	31.75	14.27	64.8	69.6	47.8	6.40	226.8	278.9	8.15 13.00
C232AH C232AHL	C2160H C2162H	101.60	28.58 57.15	31.75	14.27	68.2	73.0	47.8	7.20	228.8	285.8	9.06 12.77

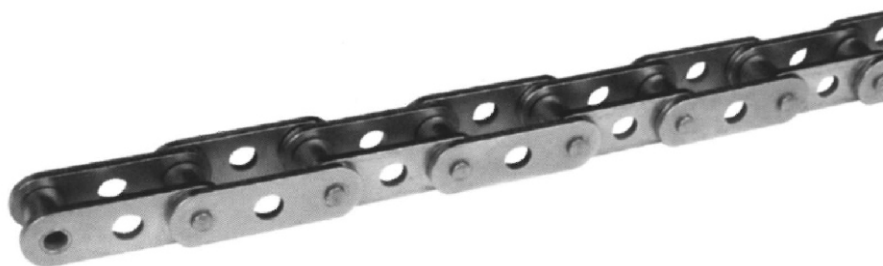
**A-1**

**K-1**

**A-2**

**K-2**


DIN/ISO	ANSI	P mm.	G mm.	L mm.	F mm.	W mm.	h <sub>4</sub> mm.	d <sub>4</sub> mm.
C208A C208AL	C2040 C2042	25.40	19.1	9.5	25.4	39.6	9.1	3.4
C208B C208BL		25.40	23.2	12.7	25.4	39.6	9.1	4.5
C210A C210AL	C2050 C2052	31.75	23.8	11.9	31.8	49.0	11.1	5.5
C212A C212AL	C2060 C2062	38.10	28.6	14.3	42.9	67.8	14.7	5.5
C212AH C212AHL	C2060H C2062H	38.10	28.6	14.3	42.9	67.8	14.7	5.5
C216A C216AL	C2080 C2082	50.80	38.1	19.1	55.6	87.8	19.1	6.8
C216AH C216AHL	C2080H C2082H	50.80	38.1	19.1	55.6	87.8	19.1	6.8
C220A C220AL	C2100 C2102	63.50	47.6	23.8	66.6	107.5	23.4	9.2
C220AH C220AHL	C2100H C2102H	63.50	47.6	23.8	66.6	107.5	23.4	9.2
C224A C224AL	C2120 C2122	76.20	57.2	28.6	79.3	121.4	27.8	11.0
C224AH C224AHL	C2120H C2122H	76.20	57.2	28.6	79.3	121.4	27.8	11.0
C232A C232AL	C2160 C2162	101.60	76.2	38.1	104.7	151.6	36.5	13.1
C232AH C232AHL	C2160H C2162H	101.60	76.2	38.1	104.7	151.6	36.5	13.1

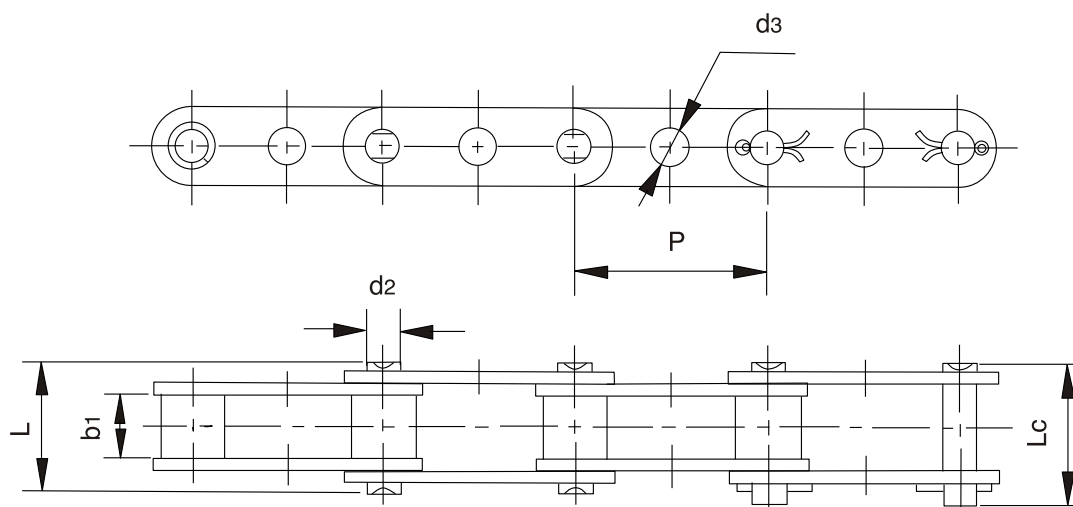
**SA-1**

**SK-1**

**SA-2**

**SK-2**


DIN/ISO	ANSI	P mm.	G mm.	L mm.	C <sub>1</sub> mm.	C <sub>2</sub> mm.	F mm.	d <sub>4</sub> mm.	d <sub>5</sub> mm.
C208A C208AL	C2040 C2042	25.40	19.1	9.5	11.1	13.5	20.5	3.4	5.5
C208B C208BL		25.40	23.2	12.7	11.1	13.5	20.5	4.5	5.5
C210A C210AL	C2050 C2052	31.75	23.8	11.9	14.3	15.9	25.0	5.5	6.6
C212A C212AL	C2060 C2062	38.10	28.6	14.3	17.5	19.1	32.9	5.5	9.2
C212AH C212AHL	C2060H C2062H	38.10	28.6	14.3	17.5	19.1	32.9	5.5	9.2
C216A C216AL	C2080 C2082	50.80	38.1	19.1	22.2	25.4	43.5	6.6	11.0
C216AH C216AHL	C2080H C2082H	50.80	38.1	19.1	22.2	25.4	43.5	6.6	11.0
C220A C220AL	C2100 C2102	63.50	47.6	23.8	28.6	31.8	50.4	8.4	13.0
C220AH C220AHL	C2100H C2102H	63.50	47.6	23.8	28.6	31.8	50.4	8.4	13.0



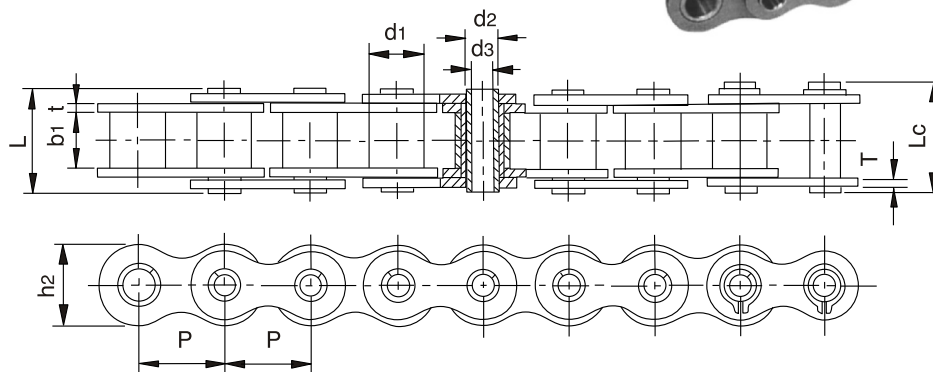


GK-1

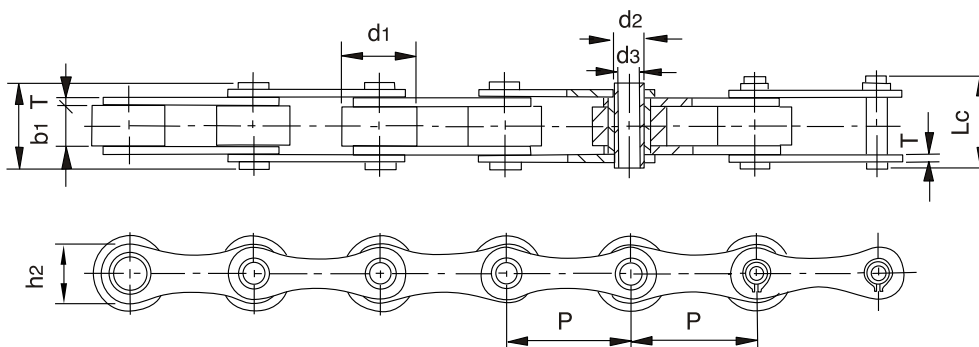


DIN/ISO	ANSI	P mm.	b1 mm.	d2 mm.	d3 mm.	L mm.	Lc mm.
C208A C208AL	C2040 C2042	25.40	7.85	3.96	4.1	16.6	18.8
C210A C210AL	C2050 C2052	31.75	9.40	5.08	5.1	20.7	23.3
C212A C212AL	C2060 C2062	38.10	12.57	5.94	8.3	25.9	28.3
C212AH C212AHL	C2060H C2062H	38.10	12.57	5.94	8.3	29.2	31.6
C216A C216AL	C2080 C2082	50.80	15.75	7.92	8.1	32.7	36.5
C216AH C216AHL	C2080H C2082H	50.80	15.75	7.92	8.1	36.2	39.4
C220A C220AL	C2100 C2102	63.50	18.90	9.53	10.1	40.4	44.7
C220AH C220AHL	C2100H C2102H	63.50	18.90	9.53	10.1	43.6	46.9

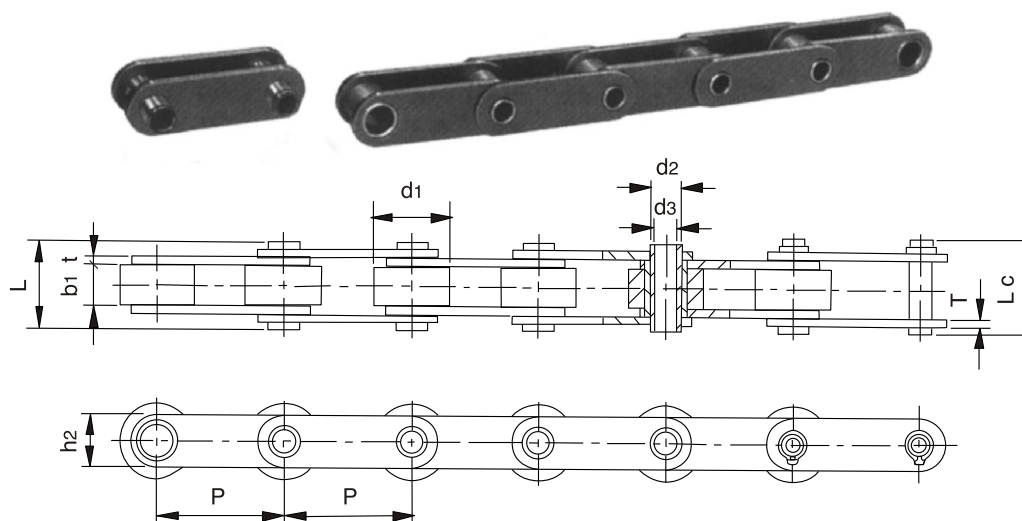
**TIPO A**



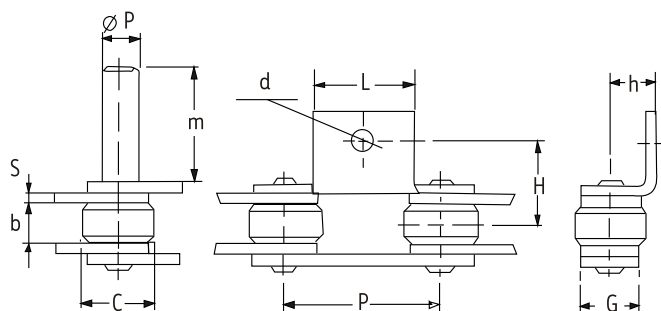
**TIPO B**



DIN/ISO	P	d1 máx	b1 mín	d2 máx	d3 mín	L máx	Lc máx	h2 máx	t/T máx	Q min.	Qo	q	
	mm.	mm.	mm.	mm.	mm.	mm.	mm.	mm.	mm.	kN	kN	kg/m.	
08BHP	12.700	8.51	7.75	6.55	4.50	16.4	17.6	11.8	1.6/1.3	11.10	12.10	0.56	A
10BHB	15.875	10.16	9.65	5.94	4.04	19.3	20.6	14.7	1.70	17.00	20.8	0.86	A
12BHP	19.050	12.07	11.68	6.50	4.00	21.6	22.8	15.9	1.85	23.60	25.9	1.09	A
60HB	19.050	11.91	12.70	7.00	5.01	25.5	26.6	18.0	2.42	20.00	22.4	1.35	A
16BHBF1	25.400	15.88	12.70	9.53	7.05	30.8	32.2	23.0	4.15/3.1	40.00	45.0	2.28	A
80HP	25.400	15.88	15.75	11.40	8.05	32.5	33.8	24.0	3.25	50.00	52.0	2.26	A
HP35	35.000	20.00	16.00	13.35	10.20	30.4	31.6	26.3	2.50	23.52	26.4	2.02	A
HP50F2	50.000	31.00	15.00	13.20	10.20	36.5	38.0	25.0	4.00	40.00	43.2	3.40	B
HB38.1	38.100	20.00	8.00	8.00	5.30	19.6	20.7	17.3	2.03	25.00	28.8	0.98	B
HB38.1F1	38.100	20.00	18.00	10.50	5.10	39.0	40.3	22.0	4.00	60.00	64.3	2.59	B
HB50.8	50.800	30.00	10.00	11.40	8.20	27.4	28.6	26.0	3.10	50.00	53.6	2.56	B
HB63	63.000	30.00	10.00	11.40	8.10	26.7	28.1	26.5	3.10	50.00	53.6	2.07	B
HB100	100.000	30.00	10.50	11.40	8.20	27.4	28.6	26.0	3.10	50.00	53.6	1.56	B

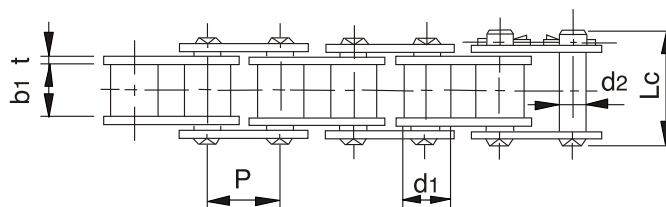
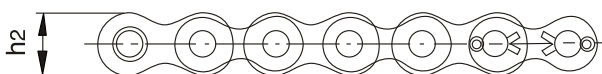


DIN/ISO	P mm.	d1 máx mm.	b1 mín mm.	d2 máx mm.	d3 mín mm.	L máx mm.	Lc máx mm.	h2 máx mm.	t/T máx mm.	Q mín. kN	Qo kN	q kg/m.
C2042HP	25.40	15.88	7.85	5.63	4.00	16.5	17.6	12.0	1.50	11.0	12.6	0.78
C2052HP	31.75	19.05	9.53	7.22	5.12	20.5	21.8	15.0	2.03	20.4	22.8	1.25
C2062HP	38.10	22.23	12.70	8.31	6.00	25.8	26.8	17.0	2.42	24.0	27.1	1.72
C2082HP	50.80	28.58	15.75	11.40	8.05	32.4	33.8	24.0	3.25	50.0	55.2	2.82
C2052HPF1	31.75	19.05	9.40	7.03	5.12	20.0	21.5	15.3	1.85	15.0	17.3	1.21
C2042H-HP	25.40	15.88	7.85	5.63	4.00	18.8	19.9	12.0	2.03	11.0	13.2	0.95
C2052H-HP	31.75	19.05	9.53	7.22	5.12	22.1	23.4	15.0	2.42	20.4	23.5	1.44
C2062H-HP	38.10	22.23	12.70	8.31	6.00	29.2	30.2	17.0	3.25	24.0	27.6	1.99
C2082H-HP	50.80	28.58	15.75	11.40	8.05	36.2	37.6	24.0	4.00	50.0	56.5	3.26
HP40	40.00	22.00	8.75	9.00	6.00	23.0	24.2	18.0	2.50	20.0	21.0	1.49
HP50	50.00	31.00	14.50	13.20	10.40	31.1	32.5	25.0	3.10	30.0	34.2	3.29
HP50F4	50.00	31.00	15.00	13.20	10.20	36.5	38.0	25.0	4.00	40.0	44.8	3.73
63HPF1	63.00	40.00	15.00	16.00	12.10	35.0	36.2	28.5	4.00	50.0	56.7	4.20
DH4202HP	50.80	31.80	15.00	14.00	10.10	36.3	39.0	26.0	3.80	42.0	51.6	3.75
DH4203HP	76.20	31.80	15.00	14.00	10.10	36.3	39.0	26.0	3.80	42.0	47.1	3.01
DH42035HP	88.90	31.80	15.00	14.00	10.10	36.3	39.0	26.0	3.80	42.0	51.1	2.79
DH4204HP	101.60	31.80	15.00	14.00	10.10	36.3	39.0	26.0	3.80	42.0	51.6	2.63
DH8403HP	76.20	47.60	19.00	19.05	13.60	43.8	46.3	39.0	5.1/3.8	84.3	130.3	6.81
DH8404HP	101.60	47.60	19.00	19.05	13.60	43.8	46.3	39.0	5.1/3.8	84.3	130.3	5.78
DH8406HP	152.40	47.60	19.00	19.05	13.60	43.8	46.3	39.0	5.1/3.8	84.0	130.3	5.18
HB75	75.00	40.00	22.00	18.00	12.20	42.0	44.0	35.0	4.0	60.0	72.0	5.57
HB76.2	76.20	31.75	15.50	12.70	9.50	35.5	37.0	26.0	4.0	42.0	49.2	3.25
HB80	80.00	50.00	20.00	24.00	18.50	44.5	46.1	40.0	5.0/4.0	79.0	92.5	6.81
HP100	100.00	45.00	22.00	16.00	12.00	46.0	47.5	35.0	5.0	75.0	90.0	6.20
HP100F1	100.00	45.00	22.00	18.00	12.00	47.2	48.5	35.0	5.0	75.0	90.0	6.15



P mm.	B mm.	C mm.	G ANCHO mm.	S GRUESO mm.	H mm.	h mm.	L mm.	d mm.	m mm.	øP mm.	ΔdaN
35.0	14.0	14	18	3.0	25.5	14.0	28	7.0	30	10	3500
35.0	16.0	20	18	2.5	25.5	14.0	28	7.0	30	10	2500
41.3	10.0	25	22	3.0	26.0	20.0	28	8.5	40	12	3500
41.3	16.0	16	22	3.0	29.0	20.0	28	8.5	40	12	3500
41.3	16.0	25	22	3.0	29.0	20.0	28	8.5	40	12	3500
50.8	16.0	25	20	3.0	30.0	16.0	35	7.0	30	10	4000
69.0	12.0	25	19	2.5	25.0	25.5	60	7.0	30	10	3000
69.0	12.5	30	25	3.0	29.5	27.5	60	9.0	40	12	4500
75.0	18.0	30	25	3.0	32.0	19.0	60	9.0	40	12	4500

P mm.	B mm.	C mm.	G ANCHO mm.	S GRUESO mm.	H mm.	h mm.	L mm.	d mm.	m mm.	øP mm.	ΔdaN
35	14	14	18	2.5	22.5	14.0	28	7	30	10	2000
*35	14	22	18	2.5	22.5	14.0	28	7	30	10	2000
*41.3	14	30	25	3.0	35.0	18.0	35	7	40	10	3500
41.3	19	30	25	3.0	37.5	18.0	35	7	40	10	3500



## DIN 8164

	P	b <sub>1</sub>	d <sub>1</sub>	d <sub>2</sub>	LC	h <sub>2</sub>	t/T			q
	mm.	mm.	mm.	mm.	mm.	mm.	mm.	mm. <sup>2</sup>	ΔdaN	kg/m
TM 15	15	14	9	6	32	14	2	111	1800	1.20
TM 20	20	16	12	8	38	19	3	184	3600	2.15
TM 25	25	18	15	10	43	24	3	250	4300	2.55
TM 30	30	20	17	11	49	28	4	319	6500	4.00
TM 35	35	22	18	12	54	30	4	372	8000	4.30
TM 40	40	25	20	14	61	35	5	504	12000	5.50
TM 45	45	30	22	16	70	40	6	688	16000	7.55
TM 50	50	35	26	18	79	44	6	864	18000	9.04
TM 55	55	45	30	20	99	48	8	1260	21000	13.60
TM 60	60	50	32	22	104	54	8	1496	26000	14.90
TM 65	65	55	36	26	113	60	8	1898	30000	18.90
TM 70	70	66.5	42	30	131	66	10	2610	35000	24.70
TM 80	80	70	44	32	150	75	12	3072	55000	31.00
TM 90	90	80	50	36	160	85	12	3816	65000	41.80
TM 100	100	90	56	42	170	95	12	4872	75000	48.04